

£390,000
Harrowby Street, Marylebone, W1H



Bright Double Studio Apartment with Long Lease Marble Arch Apartments W1H

Charming Studio Apartment with partially separated Bedroom to Living area. Bright and in good condition throughout with wood flooring, modern recently fitted kitchen and fully tiled Shower Room. Situated in the popular Marble Arch Apartments on Harrowby Street W1H. The block has 24 hour porters and the flat has the benefit of an approx lease of 975 years. Marble Arch Apartments is a ten minute walk to Baker Street and Marble Arch Underground Station. Supermarkets close at hand and the lovely coffee shops and independent shops at Connaught Village is set just off the Edgware Road.

- ✓ Lease Approx 975 years
- ✓ Double Studio Apartment
- ✓ Separate Bed to Living Area
- ✓ Fitted Kitchen
- ✓ Modern Shower Room
- ✓ Good Condition
- ✓ 24 Hour Porter
- ✓ Centrally Located
- ✓ 10 minute walk to Baker Street

These particulars are intended to give a fair description and guidance to intending purchasers/tenants and do not constitute an offer or contract. All measurements are approximate and for guidance only. Park Estates London.



Energy Performance Certificate

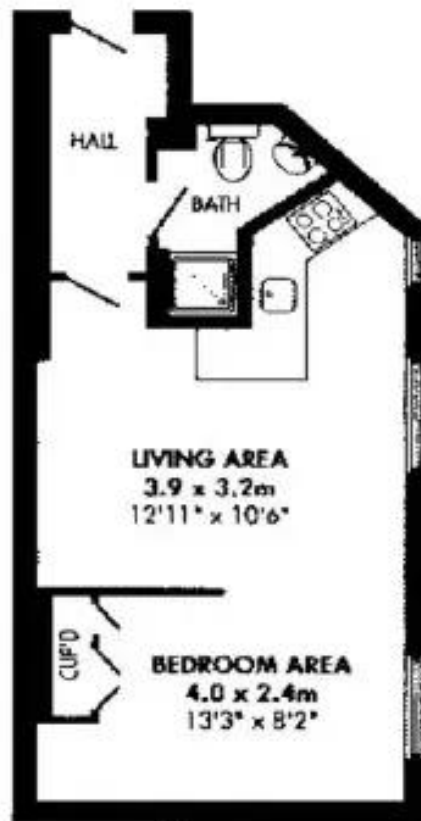
Energy Efficiency Rating		
	Current	Potential
Very energy efficient - lower running costs		
A		
B		
C		
D		
E		
F		
G		
Not energy efficient - higher running costs		
	74	78
England & Wales	EU Directive 2002/91/EC	

Location



Floor Plan

*FLAT MARBLE ARCH
APARTMENTS*



332 Square Footage

30.8 Square Meters